

## Centre Pop-up Card

### Materials

1 White 8" x 8" Card  
Coloured card  
Design sheets from CD  
Gems

### Equipment

Scoreboard  
Bone folder  
Glue or double sided tape  
Quickie Glue Pen  
Scissors  
Paper trimmer



### Instructions

1. Print off your pop up design sheets from the cd.
2. Cut out all items, and following the instructions as stated, make your pop up component.
3. Using the card centre guide (below), follow the instructions for the centre pop up, ensuring that you follow the diagram.

Top Tip: make sure when you fix your pop up to the inside of your card that you only place the double sided tape on the side panels ensuring the middle is free.

4. Print out a card front matt and layer with coloured card and fix to the front
5. To finish you card add embellishments and glitter.



Measure approx 41cm x 20.5cm on A3 card.

Cut out & Fold at 20.5cm to create a large square card- this is your base.

Adhere card cover to other side, then turn open and lay flat

Make an inner card (19.5cm x 19.5cm when closed) Cut the card to 19.5cm x 39cm and fold in half.

Measure approx 7.3cm up from base of folded card at the seam.

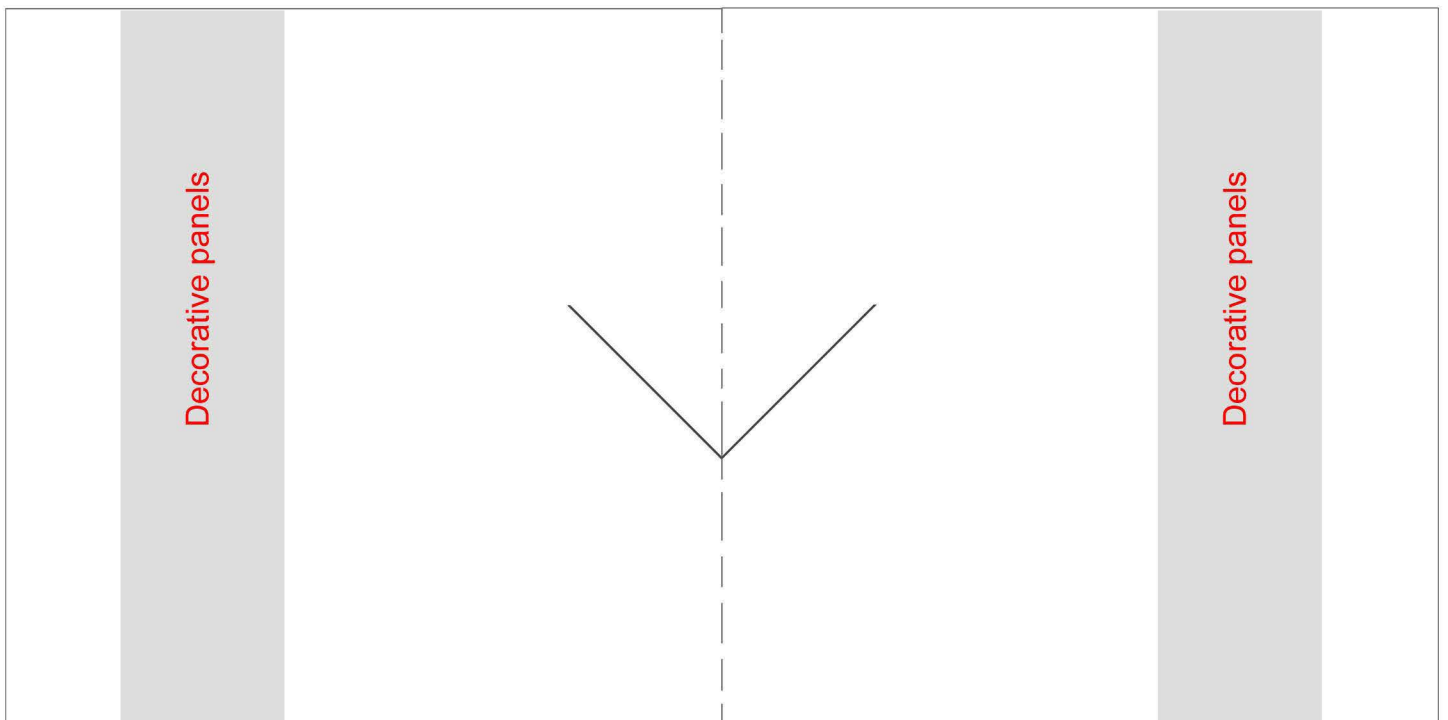
Using your pre made square stand, sit this at the top of the line just measured and turn to form a diamond.

Trace the bottom half of diamond to emulate picture guide below.

Cut these lines.

Stick the inner card to base card design by adhering it around the edges using double sided tape.

Apply glue to tabs on folding box base (diamond) Slide Tabs on box base into slits.



Inner Card-Template guide  
Slide folding square tab under slit once cut

Cut \_\_\_\_\_  
Score -----

